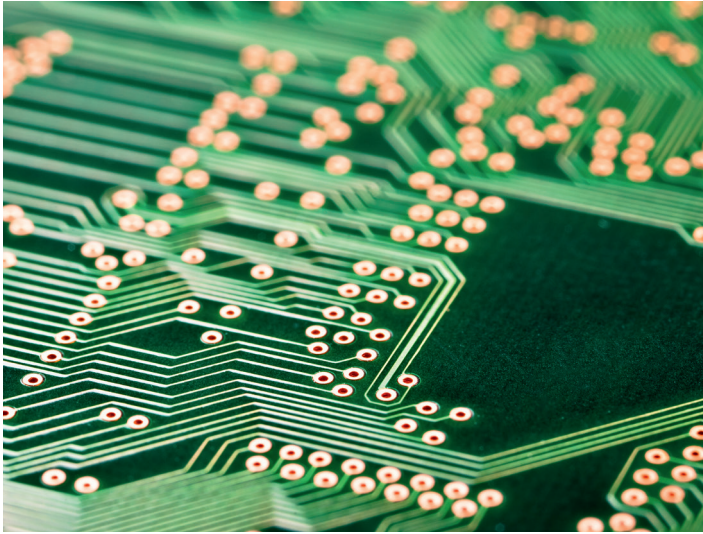


RZ7

RZ7-NT24 (BT), RZ7-NT24 (FA) IN THE BOPLA ALURAIL



Product description

RZ7-BT

Device (power supply), in accordance with the general type approval (aBG) for the installation of the hold-open system „RZ7-BT“ for fire and smoke protection closures according to aBG Z-6.500-2613.

RZ7-FA

Device (energy supply), in accordance with the general type approval (aBG) for the installation of the hold-open system „RZ7-FA“ for fire and smoke protection closures according to aBG Z-6.500-2612.

Product description	Power supply for release unit („RZ7 FAA“ with „RZ7 NT24“ or „RZ7 NT24-BMZ2“, „RZ7 NT24-BMZ2“ with „RZ7 NT24“ and „RZ4“)
Rated voltage	195,5...253 V AC
Mains frequency	47...63Hz
Connected load	200 VA AC
Inrush current	max. 10 A
Control voltage	24 V DC
Output current	3,5 A DC
Battery	2 x 12 V 7,2 Ah
Display	Foil with LED displays (can be stuck on the unit or remotely on the control cabinet door)
Housing	Bopla Alurail
Protection class	IP64
Housing dimensions (W x H x D)	Foil on unit: 140 x 105 x 70 mm Foil on control cabinet door: 140 x 105 x 80 mm
Housing (colour)	similar to RAL 9006
Ambient temperature range	0 °C ... + 40 °C

The „RZ7-NT24“ power supply in the version for top-hat rail mounting (Alurail enclosure, BOPLA) must be installed in one of the following enclosures from Rittal:

- AE (IP55) or AX (IP66) series wall-mounted enclosure
- VX25 series floor-standing enclosure (IP55)

If the RZ7-NT24 (BT) or the RZ7-NT24 (FA) is not installed in the effective range of the system's own detectors, e.g. equipment room or false ceiling, an additional detector is required. Design for installation of the hold-open system according to general design approval aBG Z-6.500-2613 (BT), aBG Z-6.500-2612 (FA).