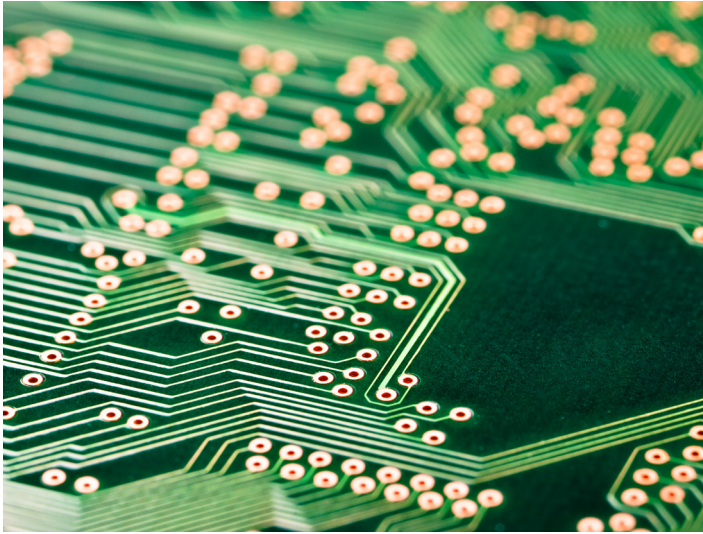


RZ7

RZ7-NT24-BMZ2 (BT), RZ7-NT24-BMZ2 (FA) IN THE BOPLA ALURAIL



Product description

RZ7-BT

Device combination (release device with power supply), in accordance with the general type approval (aBG) for the installation of the hold-open system „RZ7-BT“ for fire and smoke protection closures according to aBG Z-6.500-2613.

RZ7-FA

Device combination (release device with power supply), in accordance with the general type approval (aBG) for the installation of the hold-open system „RZ7-FA“ for fire protection closures in the course of rail-bound conveyor systems according to aBG Z-6.500-2612.

Product description	Release device with power supply
Rated voltage	195,5...253 V AC
Mains frequency	47...63Hz
Connected load	200 VA AC
Inrush current	max. 10 A
Control voltage	24 V DC
Output current	3,5 A DC
Battery	2 x 12 V 7,2 Ah
Operation/Display	Membrane keypad (possible on the unit or glued to the control cabinet door)
Fire detector connection	2 x fire detection lines with max. 20 fire detectors each
Connection locking device	According to item 2.4 under list 3, 4 or 5 of the aBG RZ7
External triggering	per fire detection line, manual release button or fire detector additionally possible
Potential-free outputs	- 1 changeover contact Fault Power supply (30 V DC 2 A) - 1 changeover contact Triggering fire alarm line 1 (30 V DC 2 A) - 1 changeover contact Triggering fire alarm line 2 (30 V DC 2 A)
Housing	Bopla Alurail
Protection class	IP64
Housing dimensions (W x H x D)	Foil on unit: 195 x 105 x 70 mm Foil on control cabinet door: 195 x 105 x 80 mm

Housing (colour)	similar to RAL 9006
-------------------------	---------------------

Ambient temperature range	0 °C ... + 40 °C
----------------------------------	------------------

The unit combination „RZ7 NT24-BMZ2“ in the version for top-hat rail mounting (Alurail enclosure, BOPLA), must be installed in one of the following enclosures from Rittal:

- AE (IP55) or AX (IP66) series wall-mounted enclosure ,
- VX25 series floor-standing enclosure (IP55)

If the RZ7-NT24-BMZ2 (BT) or the RZ7-NT24-BMZ2 (FA) is not installed in the effective area of the system's own detectors, e.g. equipment room or false ceiling, an additional detector is required. Design for installation of the hold-open system according to general design approval aBG Z-6.500-2613 (BT), aBG Z-6.500-2612 (FA).