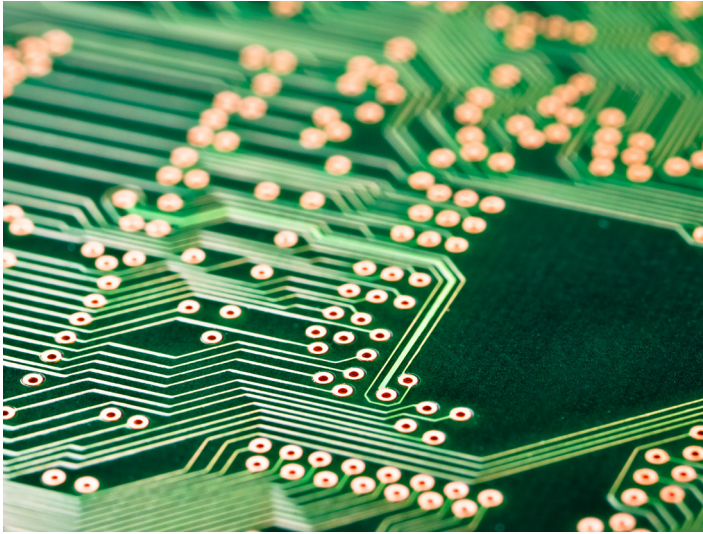


# RZ7

## RZ7-CONVEYOR SYSTEM CLOSURE



### Product description

**RZ7-Conveyor System Closure**  
(release device) according to general building approval  
no. Z-6.510-2611

<b>Product description</b>	Release device
<b>Control voltage</b>	24 V DC
<b>Operation/Display</b>	Membrane keypad
<b>Fire detector connection</b>	1 x fire detection lines with max. 20 fire detectors each
<b>Connection locking device</b>	According to item 2.4 under list 3, 4 or 5 of the aBG RZ7
<b>External triggering</b>	per fire detection line, manual release button or fire detector additionally possible
<b>Locking area monitoring</b>	Up to 4 light barriers according to Tab. 8 of aBG RZ7
<b>Potential-free outputs</b>	<ul style="list-style-type: none"> <li>- 1 change-over contact release conveyor system (30 V DC 2 A)</li> <li>- 1 changeover contact collective fault (30 V DC 2 A)</li> <li>- 1 changeover contact Limit switch open (30 V DC 2 A)</li> <li>- 1 change-over contact limit switch closed (30 V DC 2 A)</li> <li>- 1 changeover contact only own fire detectors (30 V DC 2 A)</li> <li>- 1 change-over contact all alarms (30 V DC 2 A)</li> </ul>
<b>Inputs: minus switching</b>	<ul style="list-style-type: none"> <li>- Limit switch on</li> <li>- Limit switch closed</li> <li>- Open the conveyor system closure</li> <li>- Close the conveyor system closure</li> </ul>
<b>(optional) Relay card</b>	Free-running control, partly freely programmable
<b>Housing</b>	TG ABS 2015-9-o
<b>Protection class</b>	IP64
<b>Housing dimensions (W x H x D)</b>	202 x 152 x 90 mm
<b>Housing (colour)</b>	similar to RAL 7035
<b>Ambient temperature range</b>	0 °C ... + 40 °C

Hinweis:  
Für die Feststallanlage „RZ7 FA“ muss die Auslösevorrichtung „RZ7 FAA“ gemäß allgemeiner bauaufsichtlicher Zulassung Nr. Z-6.510-2611 verwendet werden. Alternativ ist auch die Verwendung der „RZ3“ (Auslösevorrichtung mit Energieversorgung) gemäß allgemeiner bauaufsichtlicher Zulassung Nr. Z-6.510-2627 mit der Auslösevorrichtung „RZ7 FAA“ möglich.